

CALLED 0.837 ACRES  
B.C.C.F. No. 97-04284

CALLED 6.6462 ACRES  
B.C.C.F. No. 2009021802

CALLED 2.173 ACRES  
B.C.C.F. No. 201900090

END 5/5" I.R. W/CAP  
(RPLS 5439) (CM)  
157'195" W 217.50'

END 5/8" I.R. W/CAP  
(RPLS 4464) (CM)

McHARD ROAD

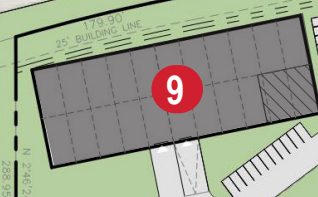
S 1.729 W 8612.91'  
L1 L2

N 87°14'04" E 516.26'

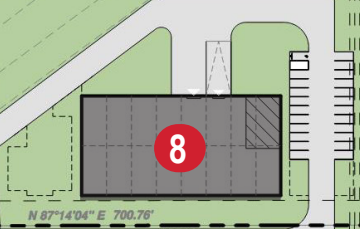
310.56'

9

N 76°18'12" E 199.55'

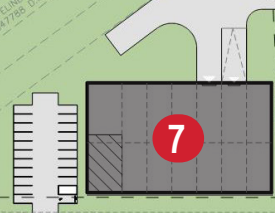


8

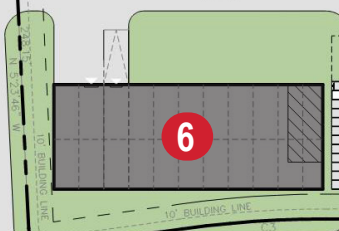


N 87°14'04" E 700.76'

7



6



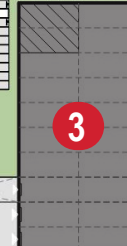
5



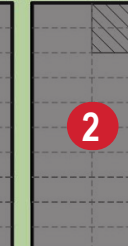
4



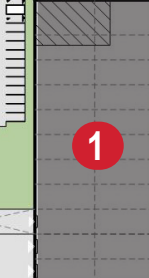
3



2



1



HIGHWAY 35

PEARLAND CEMETERY  
B.C.C.F. No. 74618543

PEARLAND CEMETERY  
B.C.C.F. No. 74618543

DOLEN ESTATES  
No. 2004218891  
B.C.P.R.

PEARLAND CEMETERY  
B.C.C.F. No. 74618543

PALLINI SUBDIVISION  
LOT 1, BLOCK 1  
No. 2005007895  
B.C.P.R.

R.O.W. DEDICATION  
8.032 ACRES  
B.C.C.F. No. 05-016850

4.824 ACRES  
RESERVE OF 18 ACRES  
B.C.C.F. No. 05-016850

PEARLAND ANIMAL  
HOSPITAL  
No. 891680789  
B.C.P.R.

ASSOCIATED BUILDING  
No. 201461  
B.C.P.R.

SOUTH HALF OF 80 ACRES  
VOL. 786, PG. 450, B.C.C.F.

CALLED 1.8388 ACRES  
B.C.C.F. No. 18-02088